

GLOBAL 2020 SEMI CASSETTE FOLDING ARM AWNING

GLOBAL AWNING ACCESSORIES



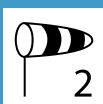
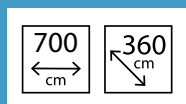
WWW.GLOBALAWNINGS.COM.AU

FEATURES

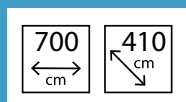
- 40mm x 40mm Square Bar
- 78mm Galvanised Steel Roller Tube
- 11:1 Gear-box is standard – Awnings over 6m should be motorized
- Compact Design which sits closer to the wall
- Projection from 1600mm to 4100mm
- Width from 2050mm to 7000mm
- Heavy Duty Arms with Stainless Steel Chain
- Modern styled Heavy Extruded Aluminium Hood and Extended front bar
- Pitch adjustment on installation can be set up to 15 degrees for optimal self alignment when closed



All photos courtesy of Jan Murphy Inside and Outside Designs in Noosaville



Wind Class 2 (European) /
Beaufort Force 5 (Australian)
Maximum wind speed of 37kms



Wind Class 1 (European) /
Beaufort Force 4 (Australian)
Maximum wind speed of 27kms

Colour Options are White, Ivory, Silver Grey or Anthracite Texture. Other standard Dulux Duralloy or Interpon Textura powder-coat colours are available at an additional cost



WHITE



IVORY



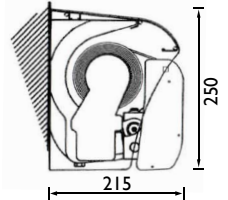
SILVER
GREY



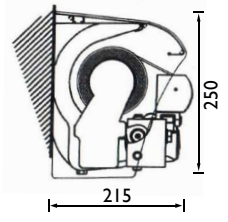
ANTHRACITE

WWW.GLOBALAWNINGS.COM.AU

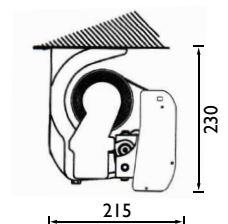
Projection (Arm Size mm)	Minimum Width	Minimum Width with Alum. Hood
1600	2010	2046
1850	2260	2296
2100	2510	2546
2350	2760	2796
2600	3000	3036
2850	3260	3296
3100	3510	3546
3600	4000	4036
4100	4500	4536



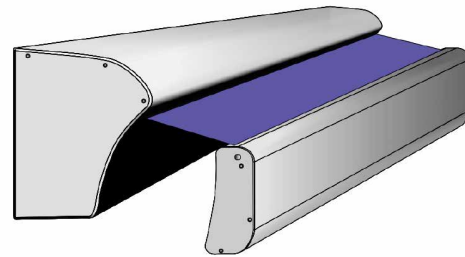
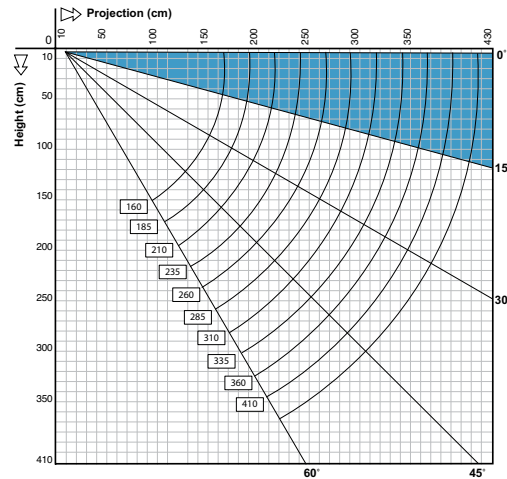
Global 2020
Semi-Cassette
Wall/Face Fix



Global 2020 with
Hood Wall/Face Fix



Global 2020
Semi-Cassette
with No Hood
Ceiling/Top Fix



YOUR GLOBAL AWNING ACCESSORIES DEALER